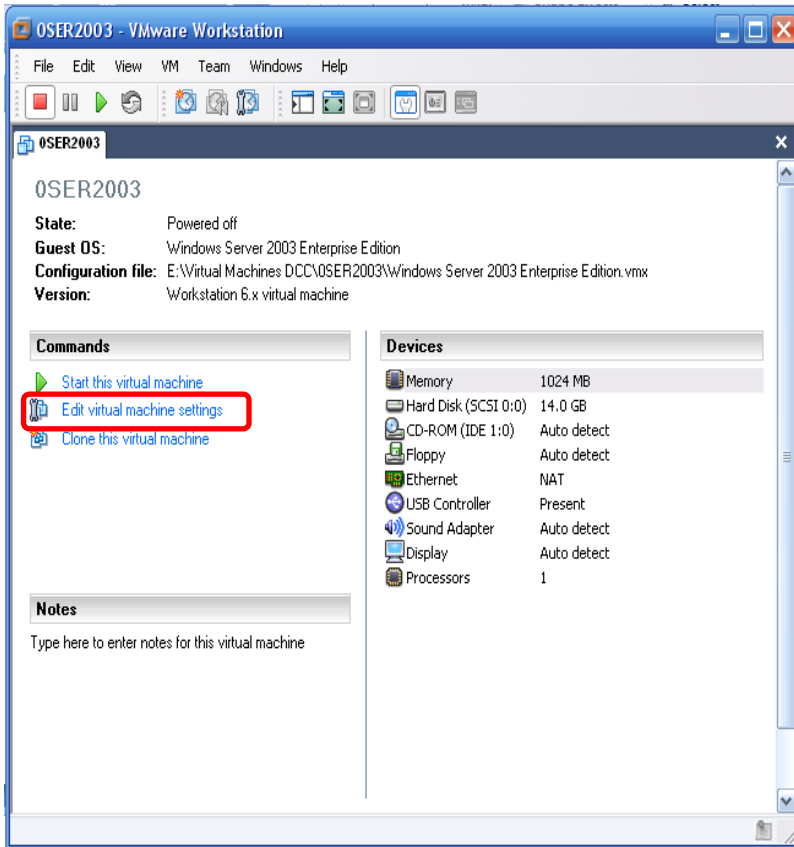


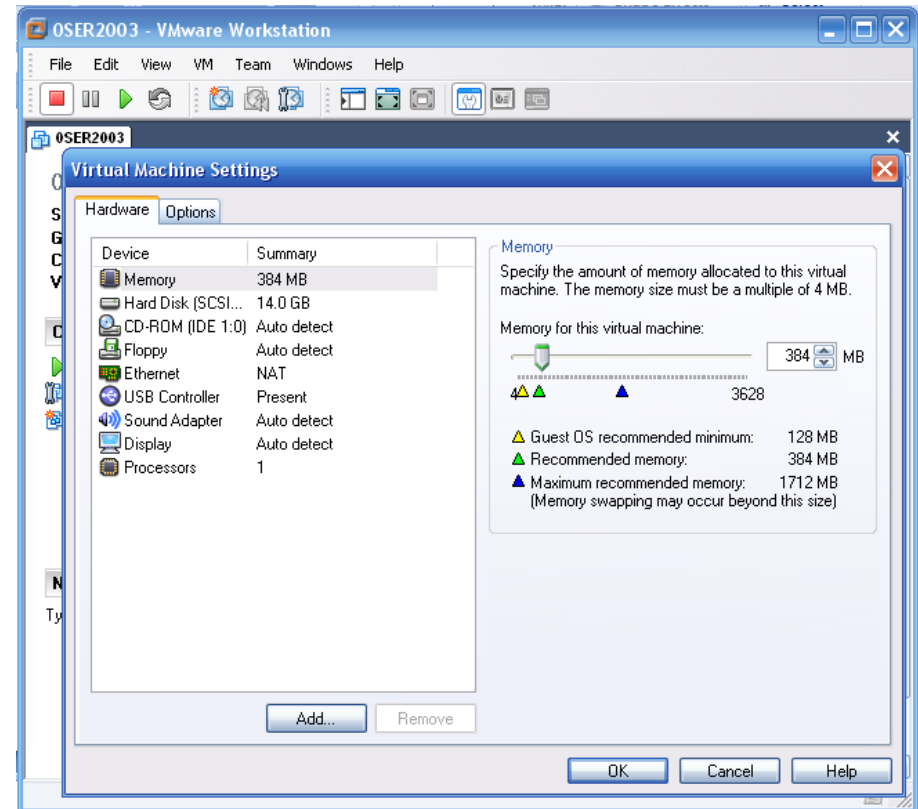
003 VMware Workstation SOP

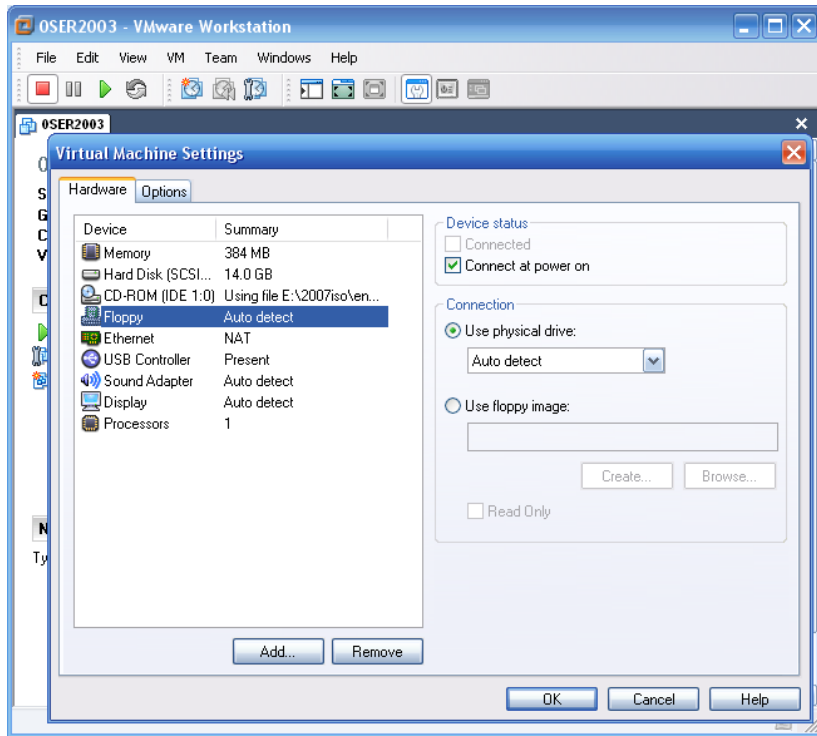
Configure an instance of VMware
Workstation



Click on the command Edit Virtual Command settings to allow access to the configuration of the image parameters

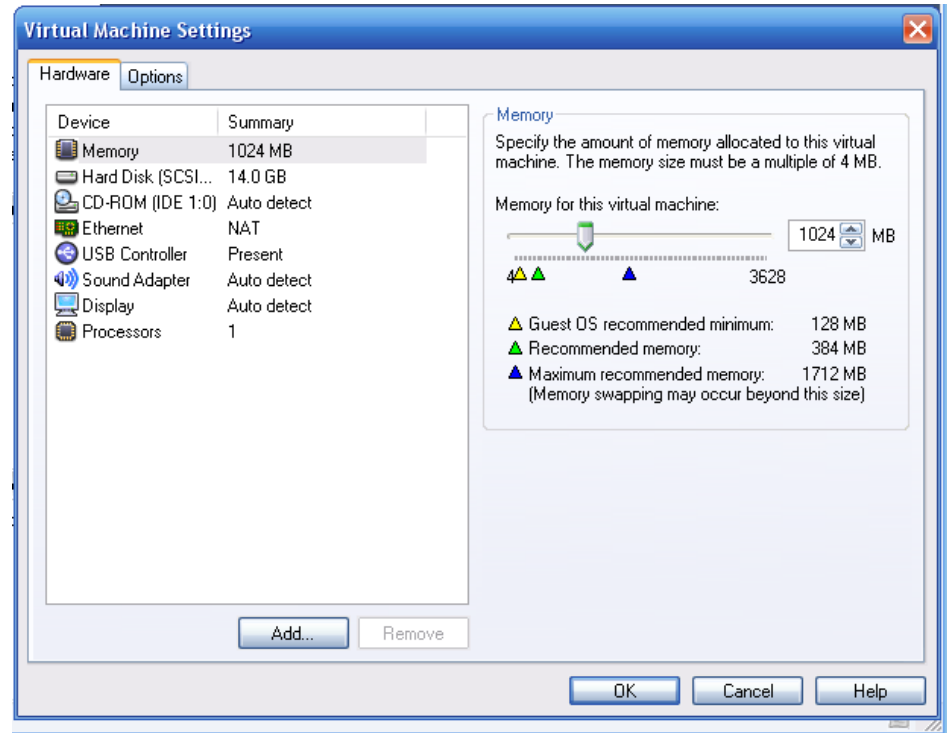
This will open a dialog window where you may change the required parameters which need to be changed which I will address one-by-one.

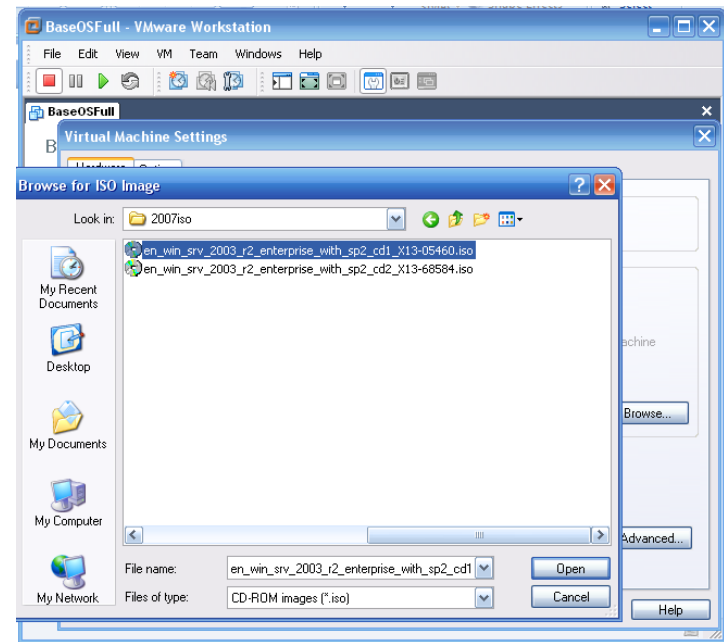
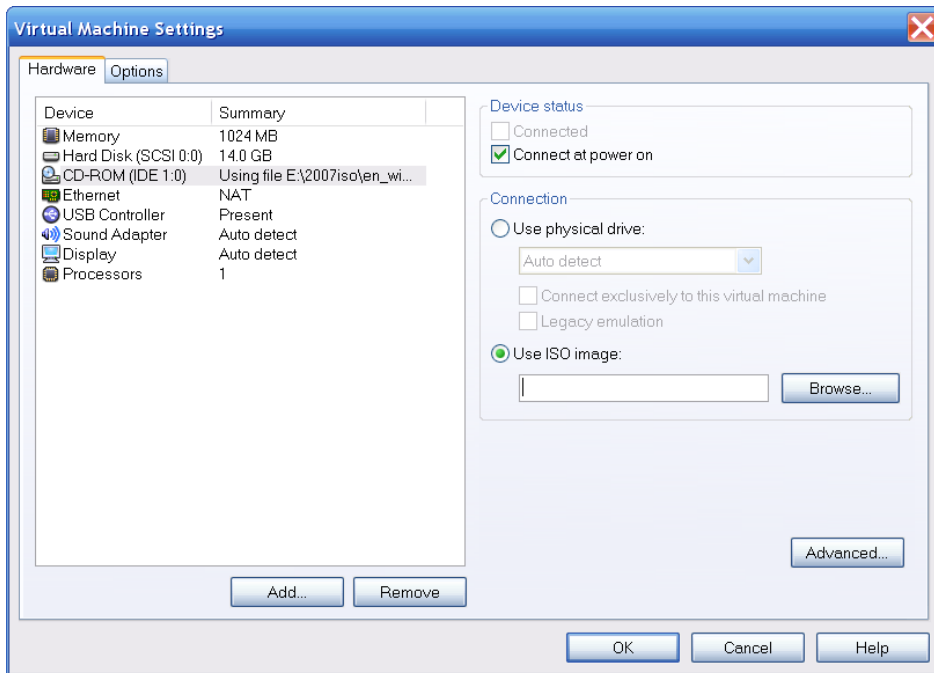




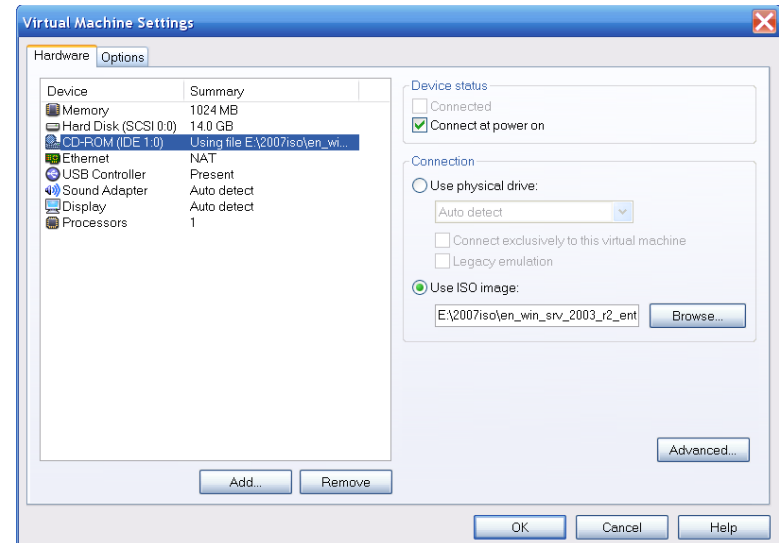
I don't need, use, or have a floppy on my laptop so I remove it.

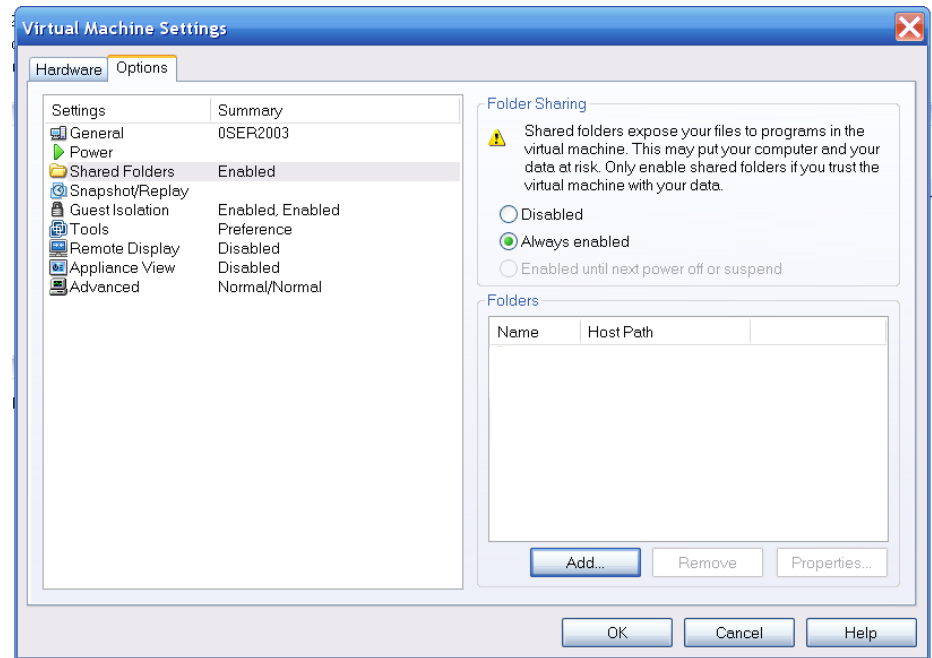
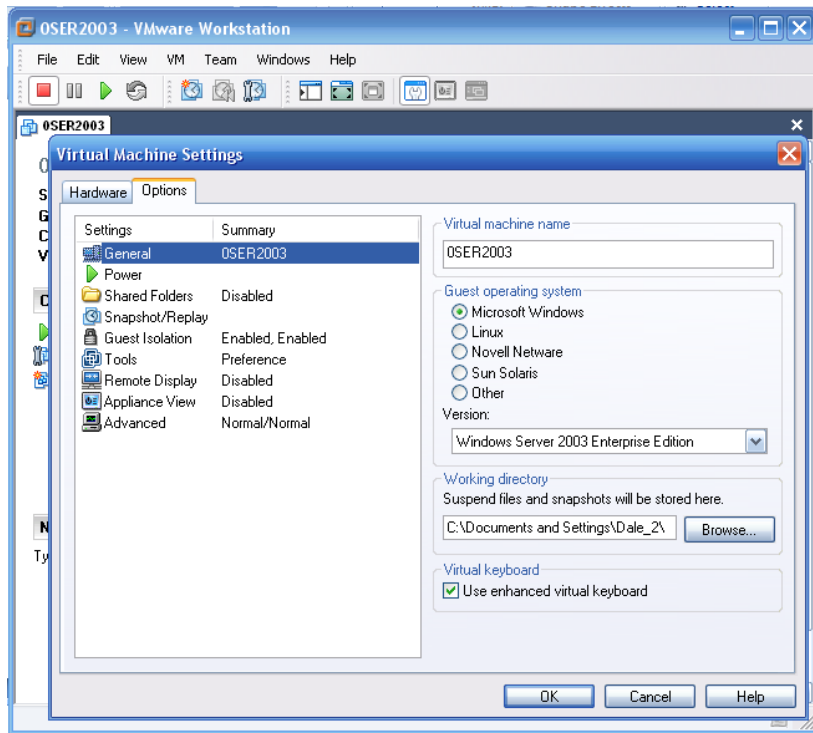
For memory setting to be used I am sure there is a formula but trial and error has shown that half the amount of cache memory available to the machine is a good level. I am going to use a 32bit version of all the software using this number. Hard disk was set when we created the work station instance. Next click on ISO Image.





Select Use ISO image if NOT using the CD physical drive Click Browse button, find the ISO image on your Laptop, highlight it, click Open, and then go to the next slide.

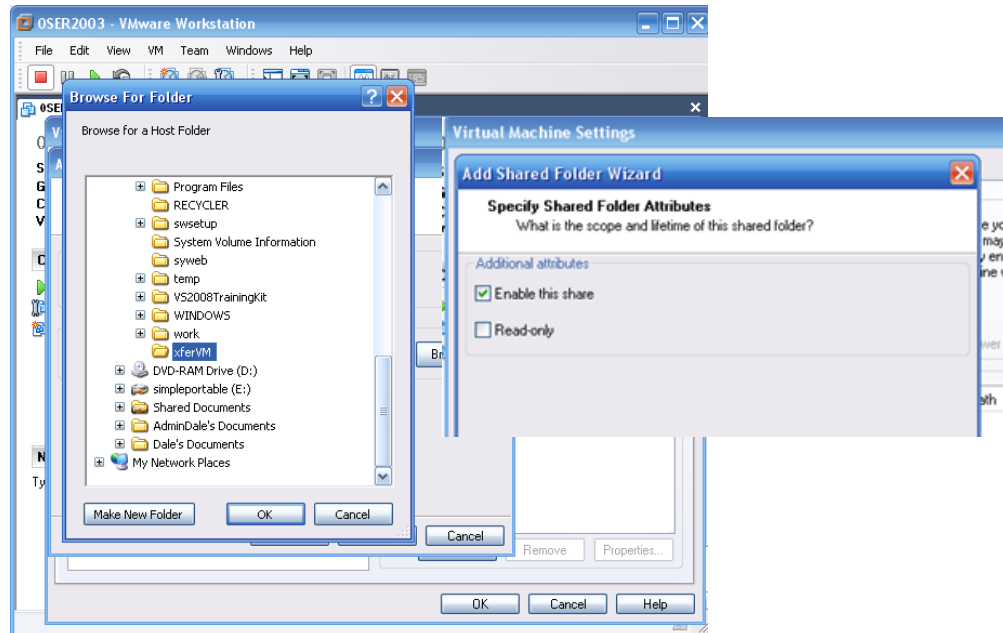


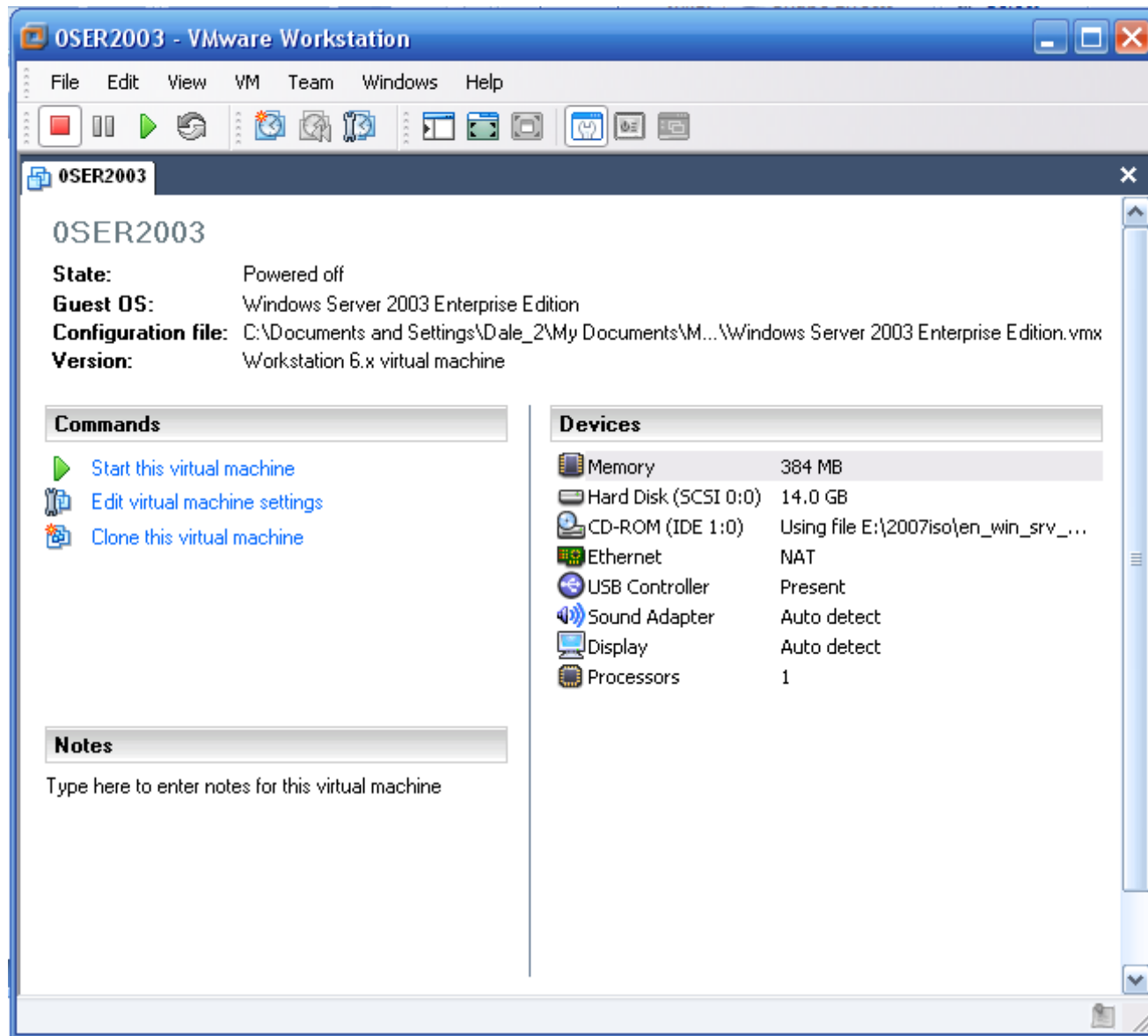


Select Options tab, select the Shared Folder – this option allows VM image to “see” and share files with the physical drive while the Virtual machine is running. Check always enabled, and Add button.

***Note: Always enabled is turned OFF each time you copy or even open a moved image the first time it is done. ***

Browse for the folder(s) you want shared and click OK, set enable this share, and it is shared. Click OK to exit options and you are configured. Got to 004 .





Continue with: 004 VMware Workstation SOP
[Install Windows Server 2003 R2 Operating System]