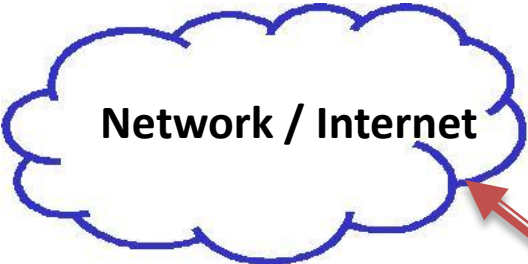
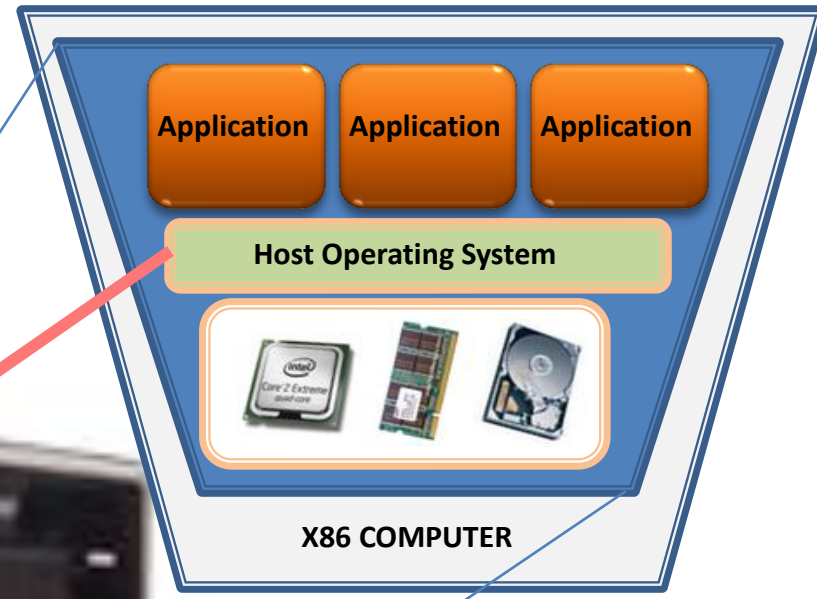
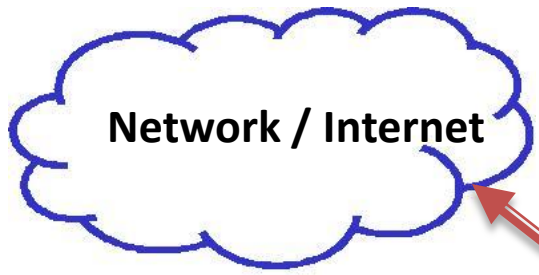


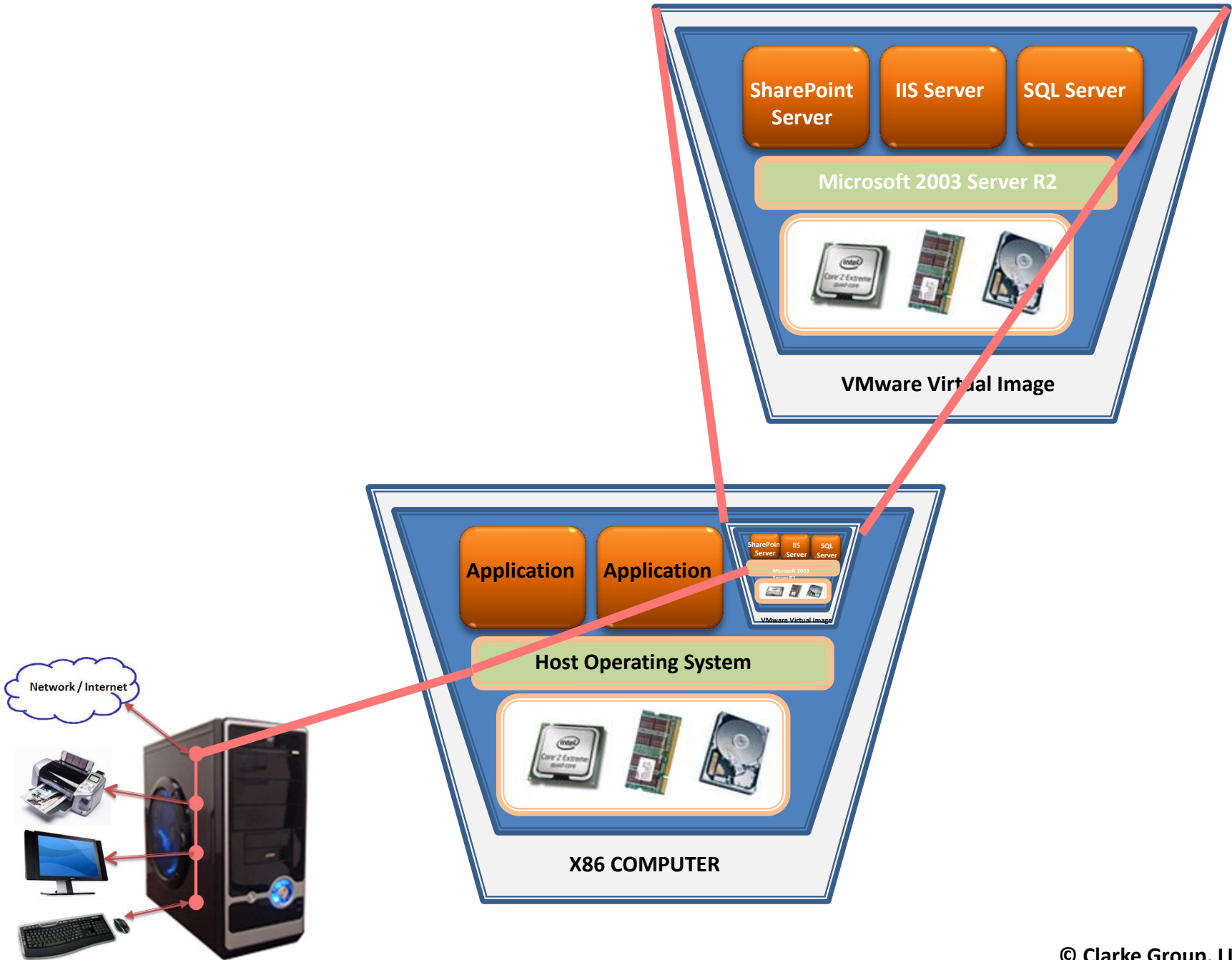
# 001 VMware Workstation

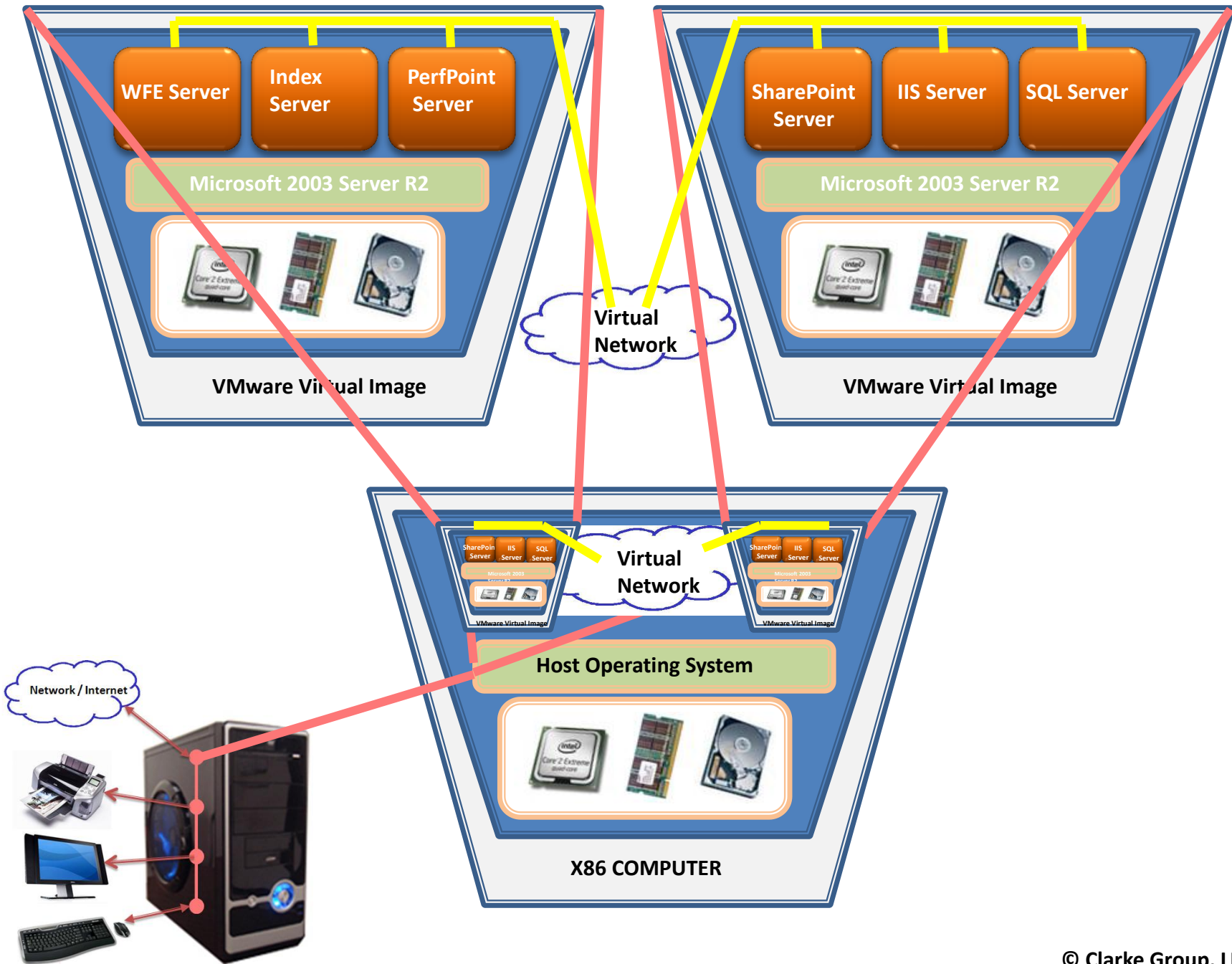
What is and why use it

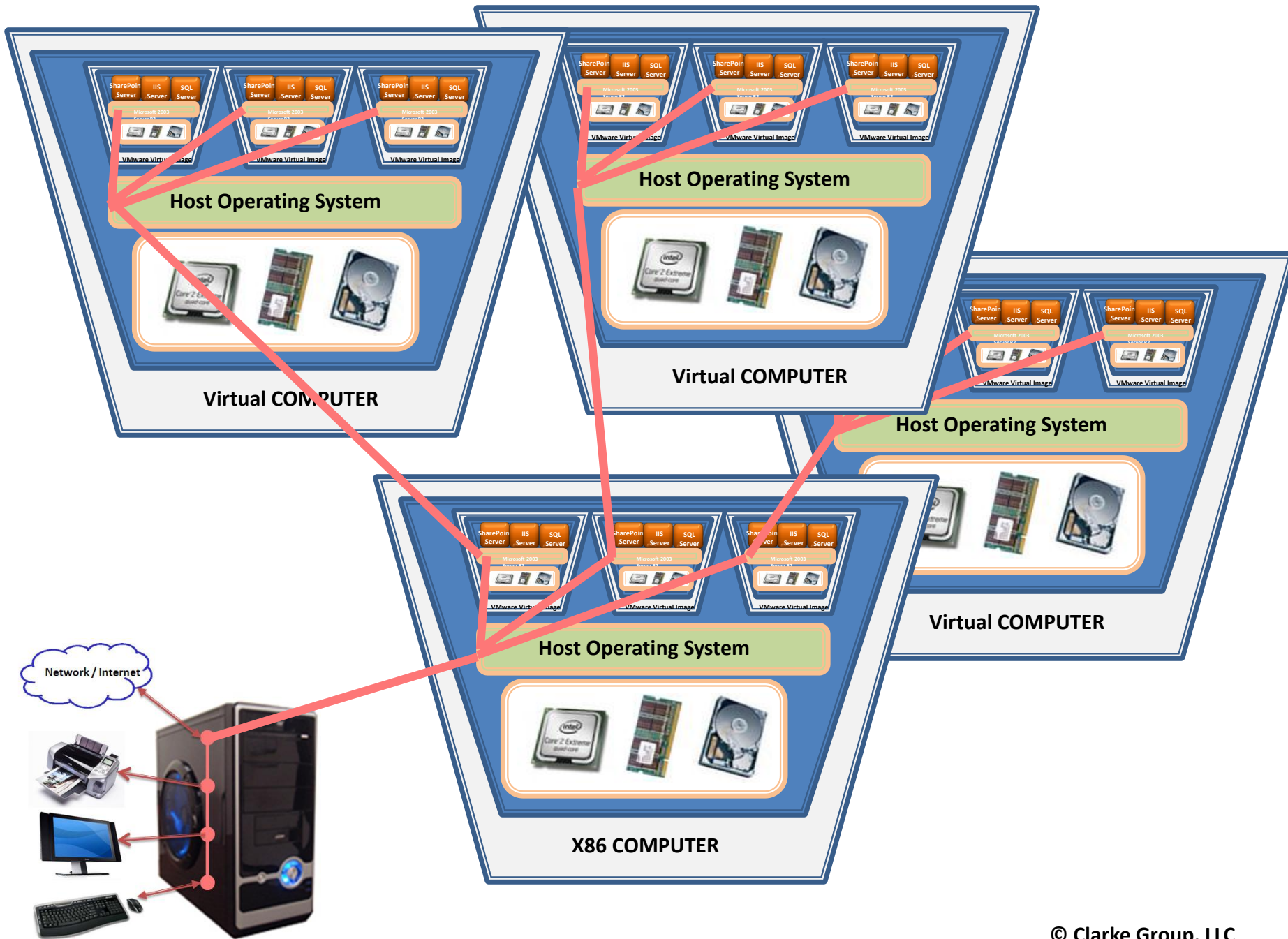
# X86 Computer

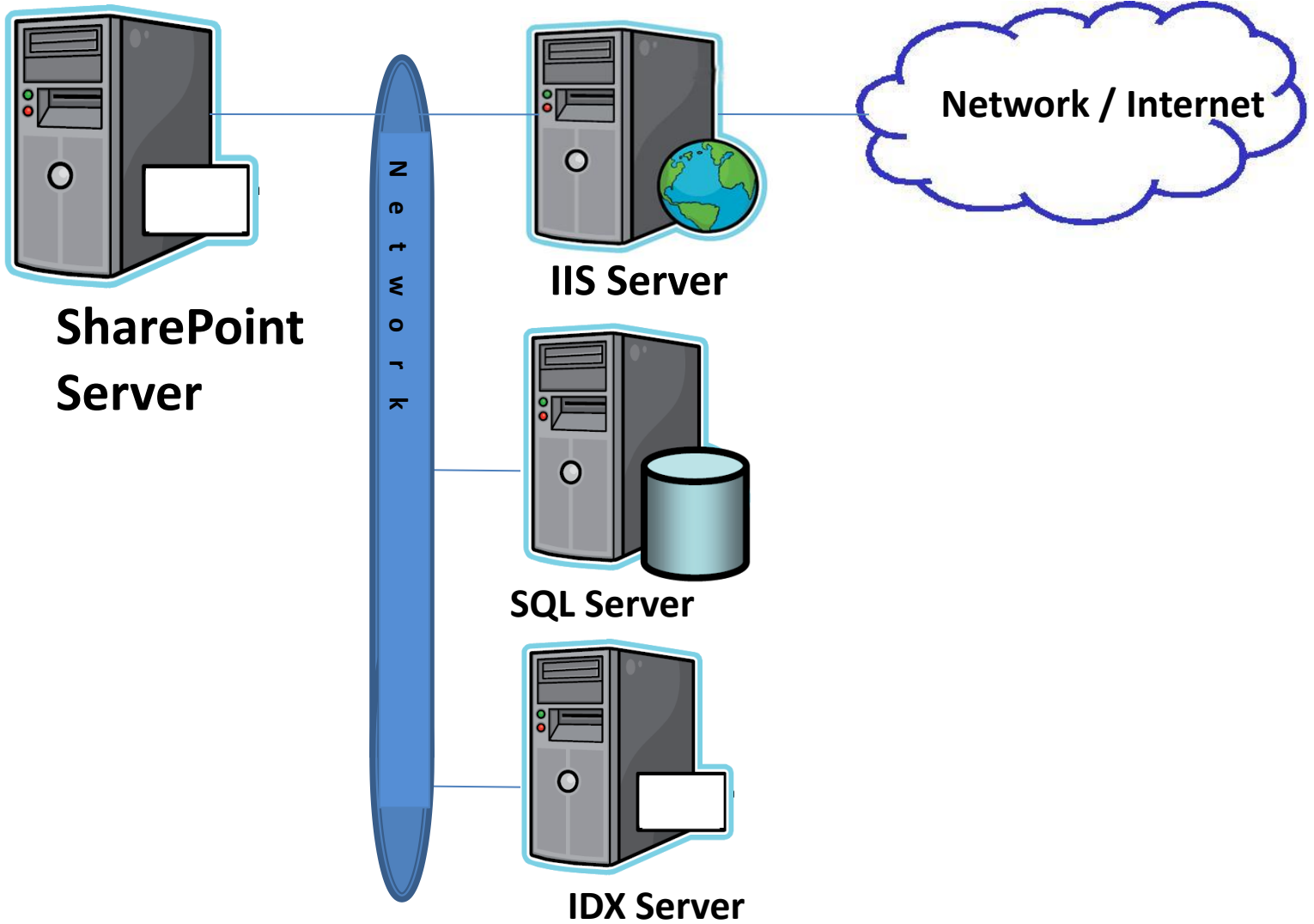




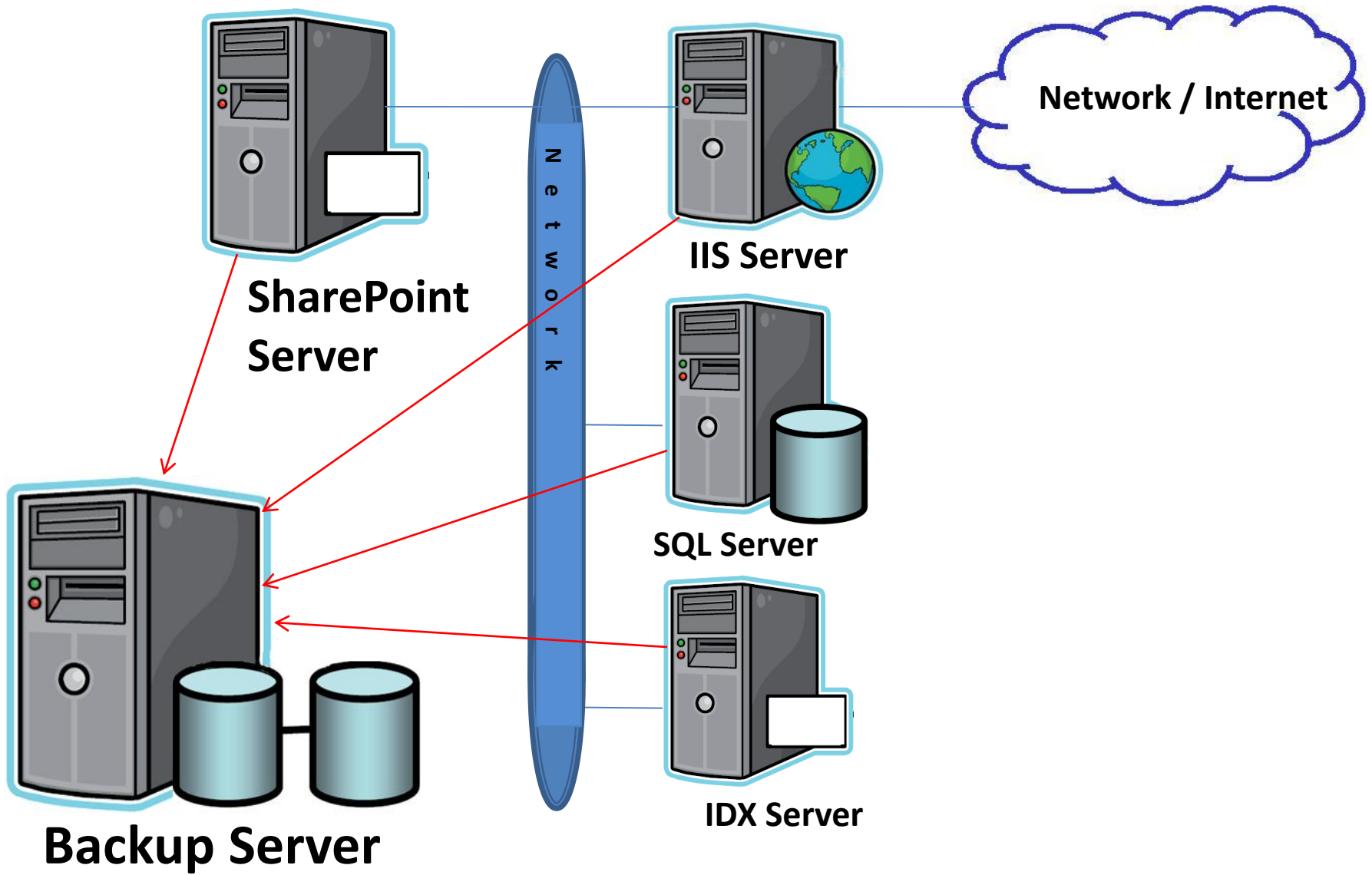






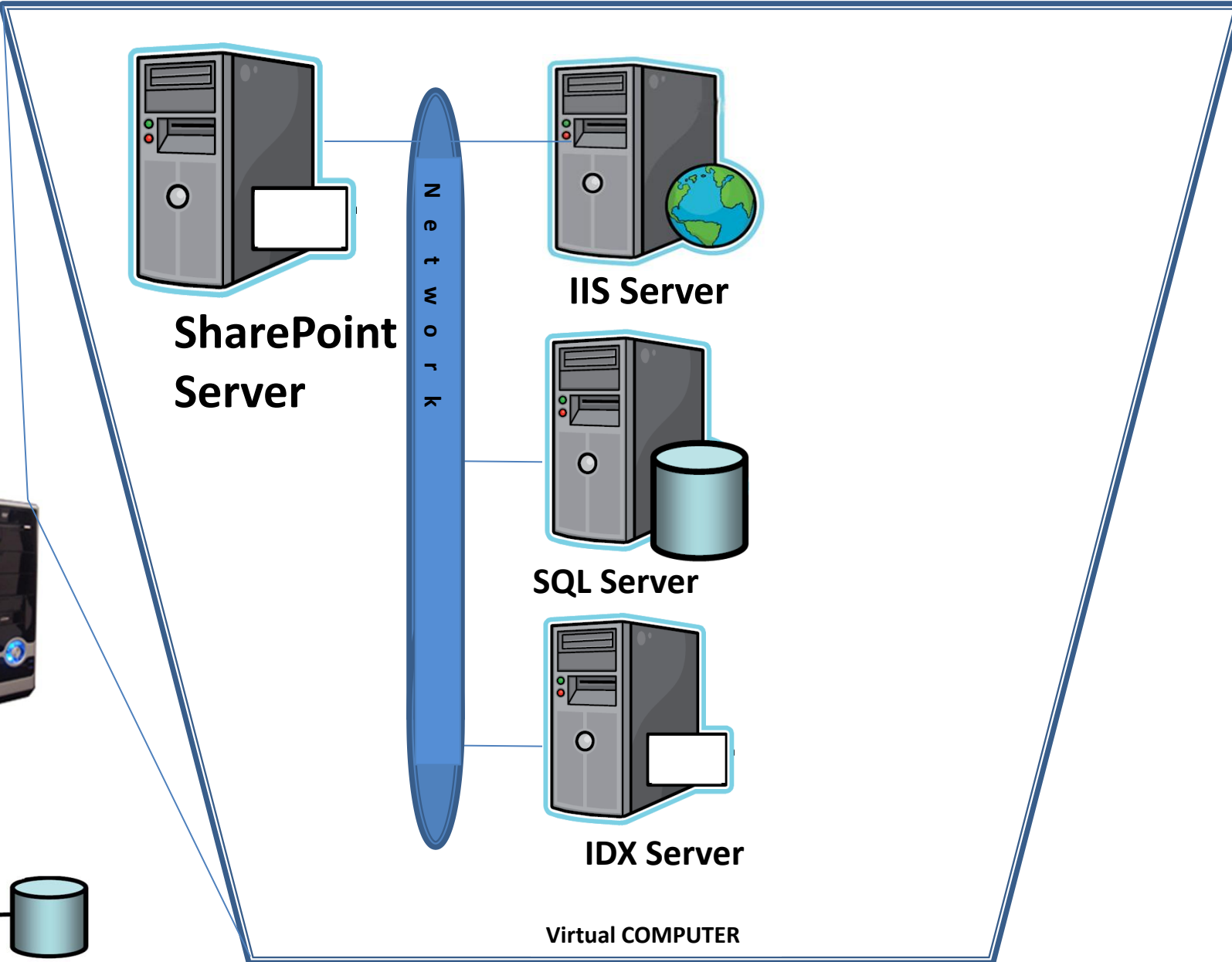


Virtual COMPUTER

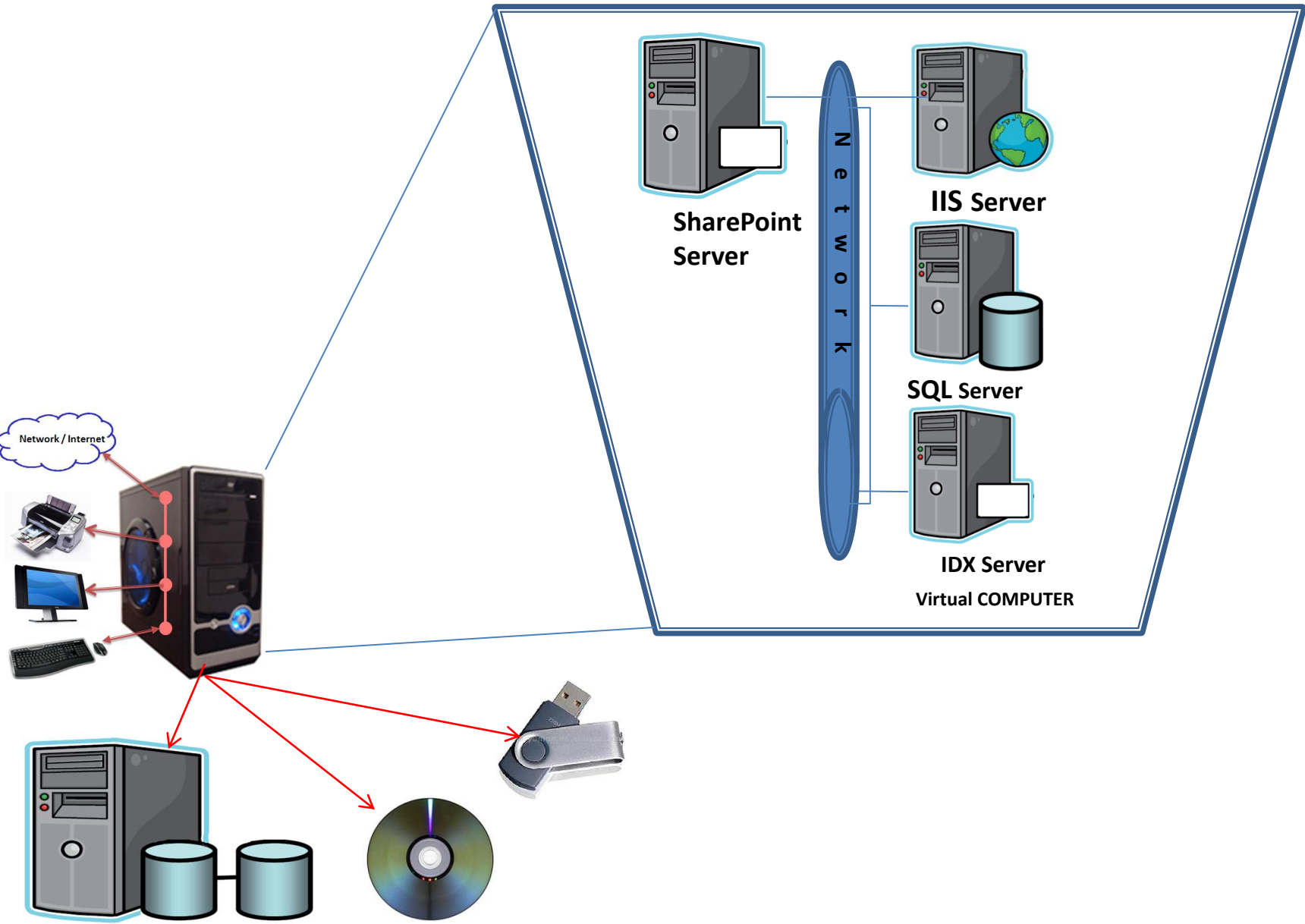


Virtual COMPUTER





Backup Server



# Steps to building a VMware Image

Time permitting will briefly cover tonight

1. Steps to building
2. Install VM Work Station
3. Configure VM Work Station
4. Install MC Server 2003 R2 OS - Part 1
5. Install MC Server 2003 R2 OS - Part 2
6. Update the OS and add Office 2007
7. Best Practices